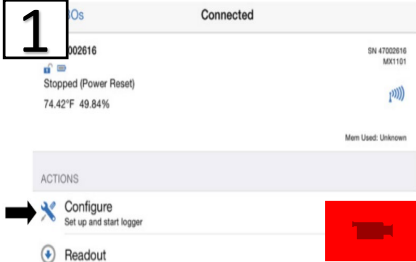


For use with : HVAC

[Temperature/Relative Humidity Data Logger \(MX1101\)](#)



### Quick Start Guide



#### 1. Launch Logger

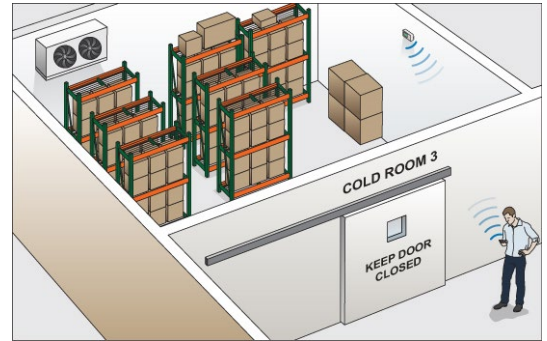
Click on image to see video for how to launch a Temp-RH logger.

#### 2 Temp-RH logger placement: Follow instructions below

1



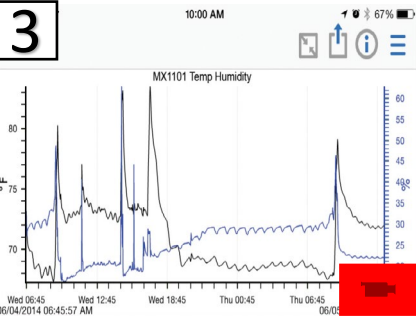
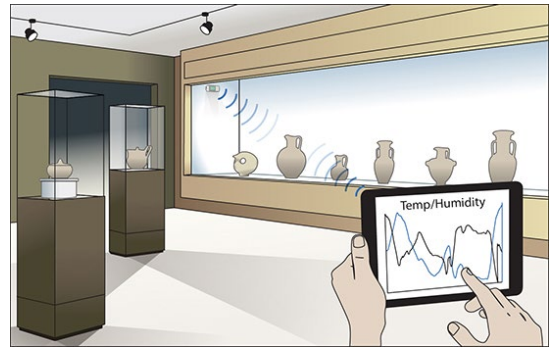
If mounting on a pipe is available use zip ties to hook and strap logger onto pipe.



2



If mounting on a non-magnetic surface, use double sided tape.



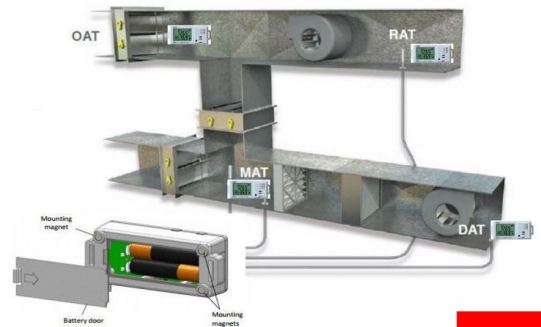
#### 3. Readout and Plot

Click on image to see video for how to readout and plot of Temp-RH data logger.

3



If mounting on a magnetic surface, such as a HVAC unit, use the magnets on the back of the MX1101.



Click on image to see video on how to install on-site.