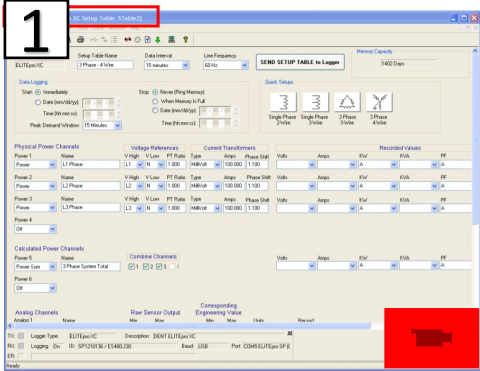


For use with : Boiler, Chiller, Electric Motors and Drives, HVAC, Lighting



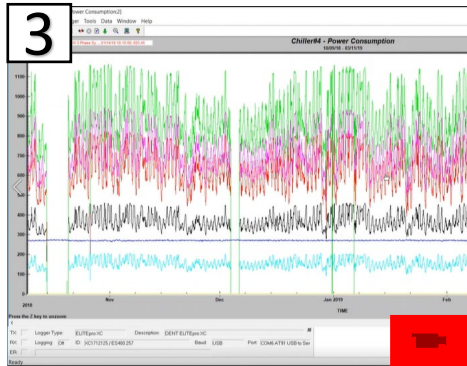
[Dent Energy Logger \(EXCUNC\)](#)

## Quick Start Guide



### 1. Launch Logger

Click on image to see video for how to launch a Dent Energy logger.



### 3. Readout and Plot

Click on image to see video for how to readout and plot of data Dent Energy data logger.

## 2 Dent energy logger placement: Follow instructions below

**1** Wear Electrical Safety Gloves rated depending on maximum voltage use

**2** Turn off electricity to panelboard

**3**

**4** Open CTs

**5** Place CT around main feed

**6** Make sure arrow is in the direction of the current flow.

**7** Close CT

**8** Repeat for all CTs

**9** Attach alligator clips to respective lug

**10** Attach alligator clips to neutral

**11** Turn electricity to panelboard on.  
Close panel door and put wires inside so that wiring is not outside of the panelboard.

Click on image to see video on how to install on-site.